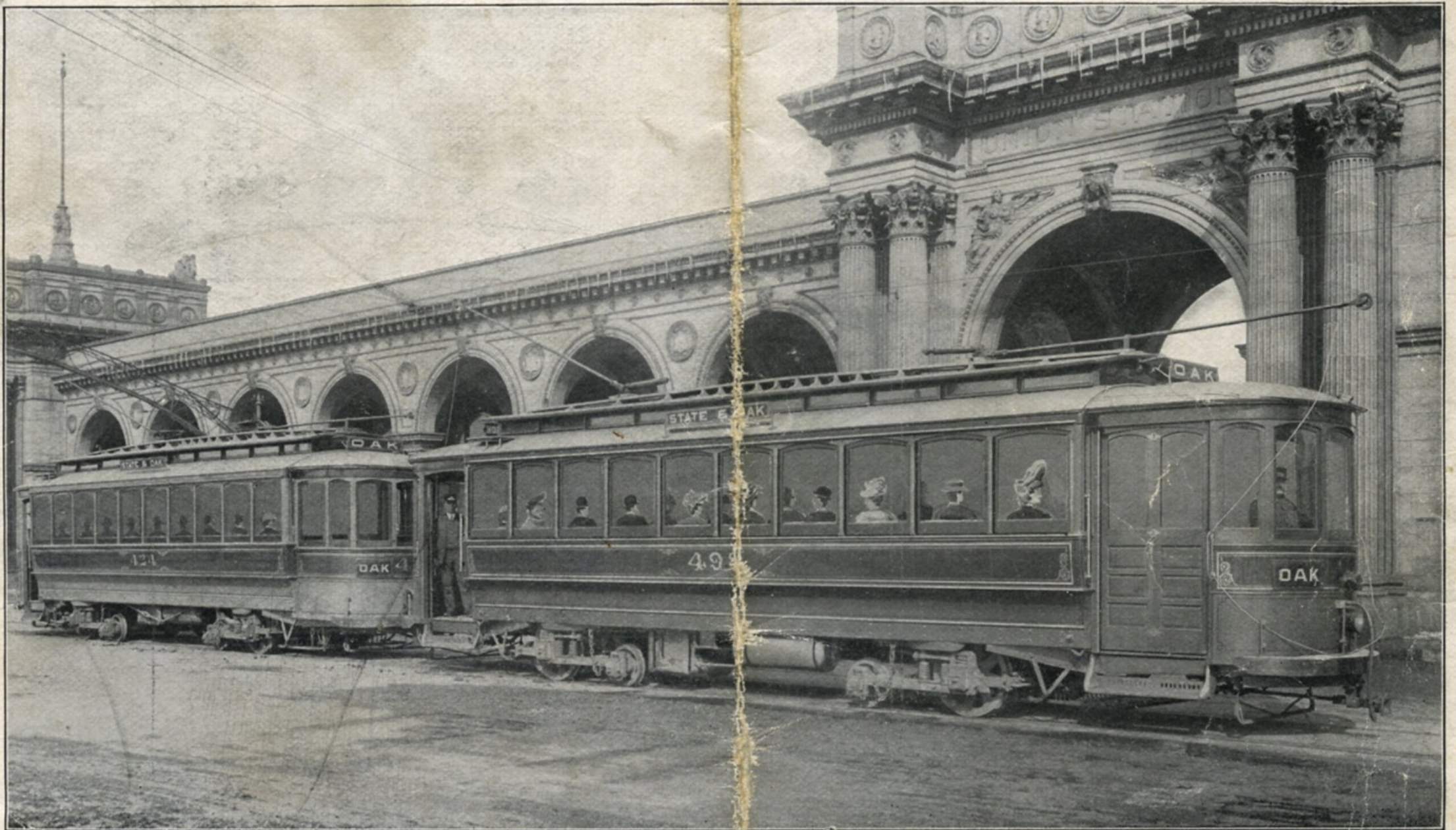


THE
COLUMBUS RAILWAY & LIGHT CO.

A COMPLETE
GUIDE TO COLUMBUS
WITH ACCURATE MAP

THE
COLUMBUS RAILWAY & LIGHT CO.

A COMPLETE
GUIDE TO COLUMBUS
WITH ACCURATE MAP



A VIEW OF ONE OF THE NEW "MULTIPLE UNIT CONTROL" TRAINS.

IMPORTANT TO STRANGERS

The Street Cars of the Columbus Railway and Light Co. pass immediately in front of the Union Station Entrance. From here cars may be taken at frequent intervals for any point in the city, including State Institutions, Hotels, Parks, Theatres, Educational Buildings, Court House, Post Office, Colleges, Hospitals and all principal houses and thoroughfares in Columbus.

No Street Railway in the country is better equipped, and none give rides of longer distance for a single fare at so low a rate.

THE COLUMBUS AND WESTERVILLE ELECTRIC LINE

Passes through an interesting Rural District and within a few squares of Otterbein University, Westerville.

Excellent Car Service. Fare Only 25c. for Round Trip

Take Cars at Town and High or Spring and High Streets.

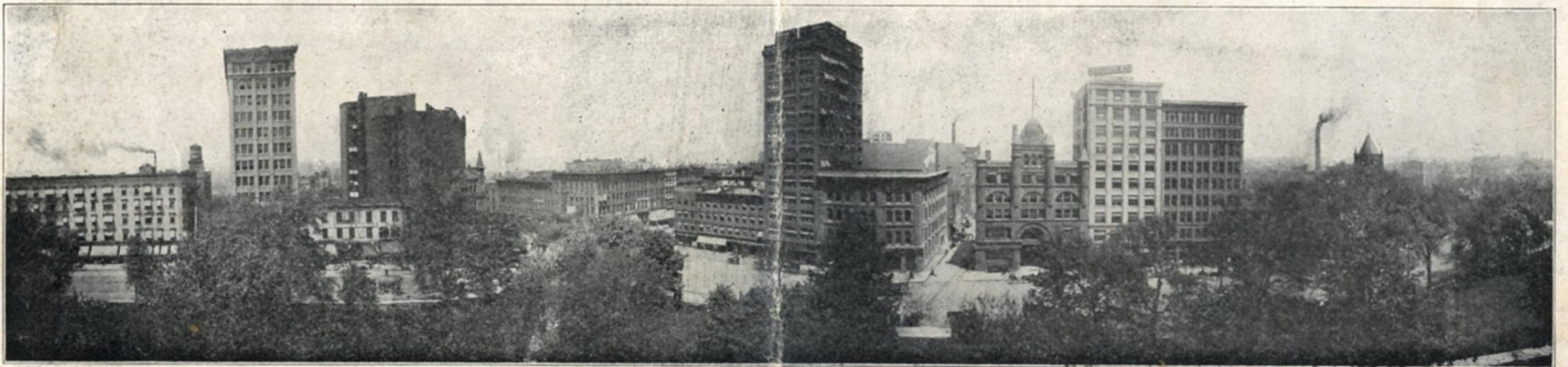
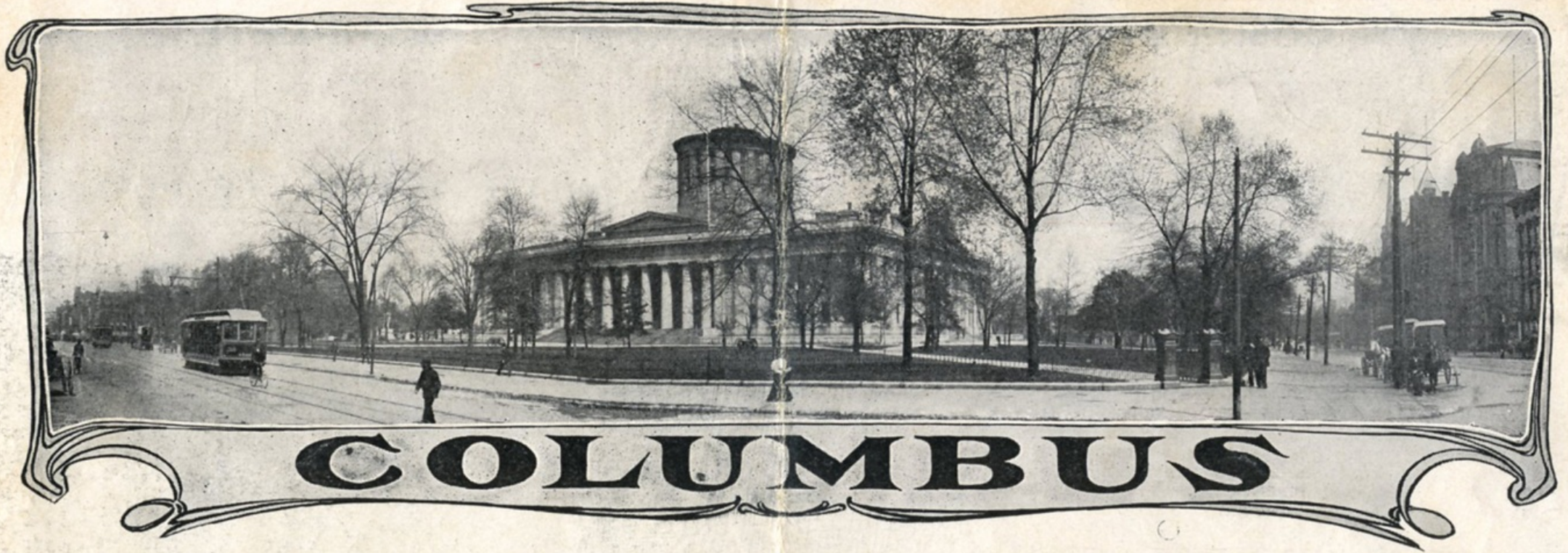
THE COLUMBUS AND ARLINGTON ELECTRIC LINE

Affords a delightful trolley ride to **Grandview and Arlington.**
Fare only 10c. for the round trip from any part of the city.

All Conductors of City Lines carry Arlington Tickets.
Take Cars at Town and High or High and Spring Streets.

Cars Chartered at Reasonable Rates for Day or Night Trolley Parties in the CITY or to ARLINGTON or WESTERVILLE.

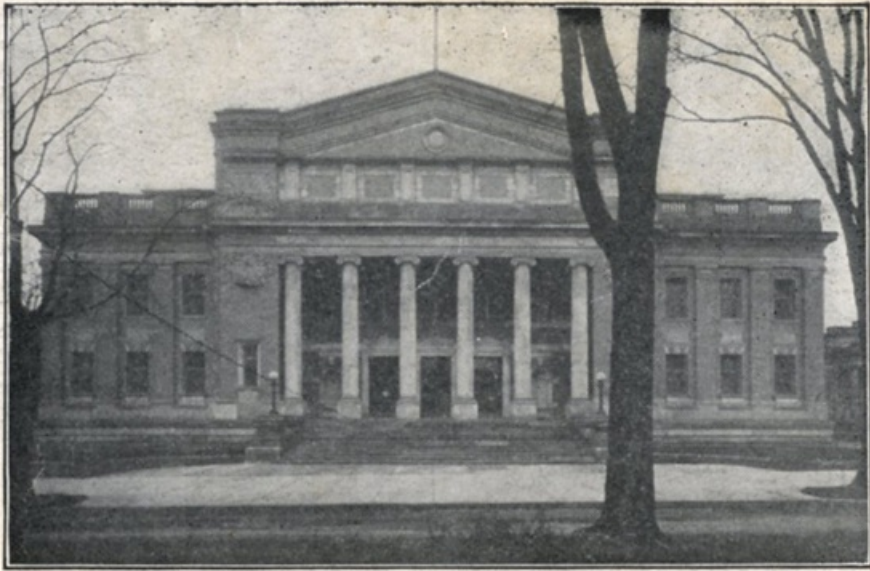
The Cars of The Columbus Railway & Light Co. Run Direct to all the Important Attractions of the City of Columbus. Large Open Cars for Summer Travel.



BIRDS-EYE VIEWS OF COLUMBUS



SEE MAP OF CITY FOLLOWING, GIVING FULL DIRECTIONS FOR REACHING ALL PLACES OF INTEREST



MEMORIAL HALL

The great Memorial Hall, built and dedicated by Franklin County to its Soldiers and Sailors, embodies a public Auditorium with a seating capacity for 5,000 people, aside from many smaller halls and rooms; is most excellent and modern in every appointment, and is a splendid credit to the County, as well as to the city of Columbus, and the State of Ohio, placing Columbus in the first rank for the entertainment of Conventions and other large gatherings.



OHIO STATE UNIVERSITY



INSTITUTION
FOR
DEAF AND DUMB

INSTITUTION FOR
BLIND

INSTITUTION
FOR
FEEBLE
MINDED

COLUMBUS
STATE HOSPITAL



FERRY-COL'S 9

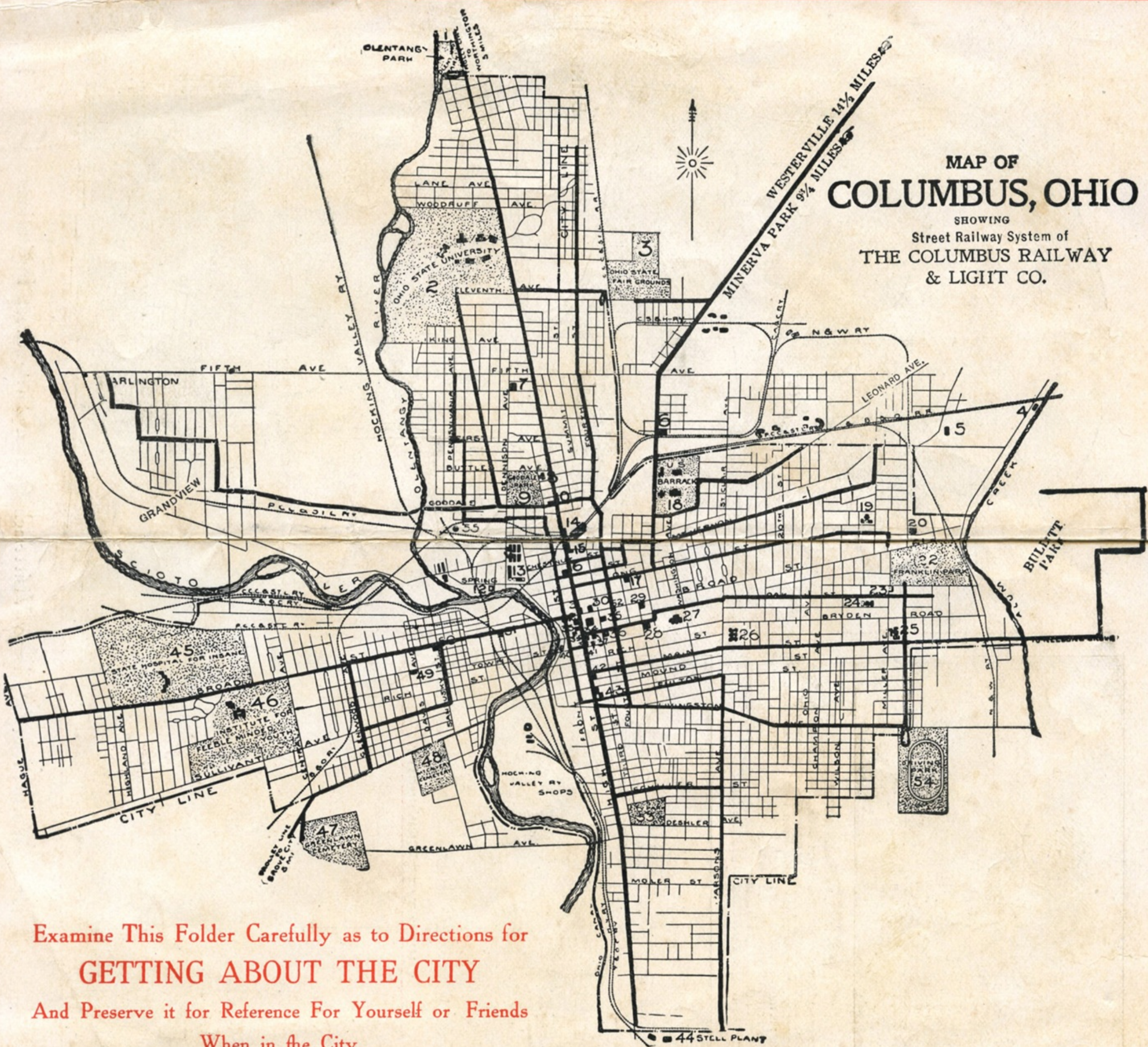


One Fare
to
Any Part
of
The City.
—
Liberal
Transfer
Privilege.

It is Worth Your While to Visit Each One of These Great Institutions

MAP OF COLUMBUS, OHIO

SHOWING
Street Railway System of
THE COLUMBUS RAILWAY
& LIGHT CO.



Examine This Folder Carefully as to Directions for
GETTING ABOUT THE CITY
And Preserve it for Reference For Yourself or Friends
When in the City.

HEAVY BLACK LINES INDICATE CAR TRACKS OF THE COLUMBUS RAILWAY AND LIGHT COMPANY.

POINTS OF INTEREST

<p>1 OLENTANGY PARK—High and Schiller Street cars, North, marked "Olentangy Park."</p> <p style="text-align: center;">2</p> <p>MINERNA PARK—All cars marked "Westerville."</p> <p>3 Ohio State University—High Street or Neil Ave. cars, North.</p> <p>4 State Fair Grounds—Fourth St. cars, North. At Fair time all cars marked "Fair Frounds."</p> <p>5 Franklin County Children's Home—Long Street cars, East.</p> <p>6 North High School*High Street cars, North.</p> <p>7 Ohio Medical University and Protestant Hospital—*High Street cars, North.</p> <p>8 Goodale Park—*North Fourth, High Street, or Neil Avenue cars, North.</p> <p>9 Park Hotel and Columbus Auditorium—*North Fourth, High Street or Neil Avenue cars, North.</p> <p>10 Columbus Railway Main Power Station—West Spring Street. 8 minutes walk from High St.</p> <p>11 Ohio Penitentiary—West Spring Street, 5 minutes walk from High Street.</p> <p>12 Union Station—Cars of all lines marked "Union Station."</p> <p>13 Davidson House—Cars of all lines marked "Union Station."</p> <p>14 Chittenden Hotel and High Street Theatre—Cars of all lines marked "Union Station" and Spring Street and Leonard Avenue cars.</p> <p>15 The Normandie—Long Street cars, East.</p> <p>16 United States Barracks—Leonard Ave. cars, East.</p> <p>17 Saint Anthony's Hospital—Long St. cars, East.</p>	<p>18 Hare Orphan's Home—Long Street cars, East.</p> <p>19 Home for Aged—Long Street cars, East.</p> <p>20 Franklin Park—**Long Street or State and Oak Street cars, East.</p> <p>21 Children's Hospital—*State and Oak Street cars, East.</p> <p>22 East High School—*State and Oak St. cars, East.</p> <p>23 St. Vincent's Orphans Asylum—*Main St. cars, East.</p> <p>24 Institution for the Blind—*Main St. cars, East.</p> <p>25 Institution for the Deaf and Dumb—State and Oak Street cars, East.</p> <p>26 Starling Medical College and St. Francis Hospital—*State and Oak Street cars, East.</p> <p>27 Central High School—*State and Oak St. cars, East.</p> <p>28 Board of Trade—*East Broad Street, Opposite State House. High, Schiller, Main, Neil, Oak, Livingston or North Fourth Street cars.</p> <p>29 Neil House, Newell European Hotel, State House—*High, Schiller, Main, Neil, State, Oak, Livingston or North Fourth Street cars, pass these.</p> <p>30 Young Men's Christian Association Building—Third Street, Opposite State House. High, Schiller, Main, Neil, Oak, Livingston and North Fourth Street cars.</p> <p>31 Post Office and Custom House—*State and Oak Street cars, East.</p> <p>32 Grand Opera House—*State and Oak St. cars, East.</p> <p>33 City Hall—State and Oak Street cars, East.</p> <p>34 The American and Emerson Hotels—**High, Schiller, Main, Oak, Livingston, or Long St. cars, South.</p> <p>35 City Prison—Front Street cars, South.</p>	<p>36 Public School Library—*High, Schiller, Main, Livingston, or Long St. cars, South.</p> <p>37 Great Southern Hotel and Theatre—**High, Schiller, Main Livingston or Long St. cars, South.</p> <p>38 Franklin County Court House and Jail—**High, Schiller, Main, Livingston or Long St. cars, South.</p> <p>39 Steel Plant—Steelton—*High Street cars, South.</p> <p>40 State Hospital for Insane—Broad St. cars, West, marked "Camp Chase."</p> <p>41 Institution for Feeble Minded—Broad Street cars, West, marked "Camp Chase."</p> <p>42 Greenlawn Cemetery—Broad Street cars, West, marked "Cemeteries."</p> <p>43 Mt. Calvary Cemetery—Broad Street cars, West, marked "Cemeteries."</p> <p>44 Mt. Carmel Hospital—Any Broad St. car, West.</p> <p>45 Convent of the Good Shepard—Any Broad St. car, West.</p> <p>46 Toledo and Ohio Central Ry. Station—Any Broad St. car, West.</p> <p>47 Columbus Club—*East Broad St. High, Schiller, Main, Oak, or Livingston Avenue cars.</p> <p>48 City Park—*High Street cars, South.</p> <p>49 Columbus Driving Park—*Livingston Ave. cars, East also Main St. cars, East, at time of races.</p> <p>50 Capital University—*East of Alum Creek—Main Street cars, East.</p> <p>51 Grand View—Arlington cars, West.</p> <p>52 Arlington—*Arlington cars, West.</p> <p>53 Hartman Hotel—*Corner Fourth and Main Streets. Take Main Street cars, East.</p>
--	---	--

*Cars pass Union Railway Station.
**Cars pass Union Railway Station, except Long Street.

THE CAPACITY OF COLUMBUS FOR THE ENTERTAINMENT OF GUESTS

PRINCIPAL HOTELS AND THEIR CAPACITIES

Chittenden, Fire Proof, - 1200	Park Hotel, - - - - - 250
Great Southern, Fire Proof, 1200	Davidson Hotel, - - - - - 250
The Neil, - - - - - 400	Star Hotel, - - - - - 100
Hartman Hotel, - - - - - 200	Many others of smaller capacity
Newell Hotel, - - - - - 250	

AND ALL UP-TO-DATE ACCOMMODATIONS

HALLS AND THEATRES, WITH SEATING CAPACITIES

Franklin County Memorial, 6000	G. A. R. Hall, - - - 1000
City Hall, - - - - - 4000	Empire Theatre, - - - 2000
O. S. U. Gymnasium, - 4000	Great Southern Theatre - 1700
Board of Trade, - . - 2000	Grand Opera House, - - 1500
Wirthwein's Hall, - - - 2000	High Street Theatre, - - 1700
Great Southern Hall, - - 1000	Others of smaller capacity
Chittenden Auditorium, - 1000	

The Best and Most Abundant Hotel Accommodations

A FEW OF
OUR LEADING
HOTELS

CHITTENDEN
HOTEL



DAVIDSON
HOTEL



NEIL
HOUSE



GREAT
SOUTHERN
HOTEL



PARK HOTEL



HARTMAN
HOTEL



TERRY
COLS O

THE CITY OF CONVENTIONS

Columbus has become educated in the treatment and handling of Conventions and Excursions. Since it was a small village, it has been the Capital of Ohio, and naturally enough, Conventions and Excursion parties drifted to the Capital—first, because it was the Capital; and second, because IT WAS THE CENTER OF THE STATE and has always commanded superior railroad facilities.

A number of EXTRAORDINARILY LARGE assemblages of people have gathered in Columbus, and the city has ever shown the capacity easily to adjust itself to such demands.

WHEN HOTEL OR PRIVATE ACCOMODATIONS HAVE BEEN SECURED

Remember that THE COLUMBUS RAILWAY & LIGHT Co. is equipped to take care of all the people wherever its lines of Street Railway reach. Make free use of your opportunity to see all of the city, and you will be enabled to tell your friends many things about Columbus entirely new to them.

LOW FARES, LARGE CARS, SPLENDID TRACK AND QUICK TIME

Stand out as prominent features in the operations of THE COLUMBUS RAILWAY & LIGHT Co.

RAPID GROWTH

Columbus is growing with great rapidity, and will continue to do so; it has the money, the brains and the activity necessary to make it within a few years one of the greatest inland cities of the United States. If you want to locate a business or a home, now is the time; the "ground floor" will soon be taken.

THE FAMOUS ARCHES

Across High Street for a distance of one mile, ornamental steel arches are suspended at intervals of one-half square, each having fifty incandescent electric lamps. The illumination on buildings and street at night presents one of the most pleasing effects to be seen in any progressive city, and is the admiration of everyone visiting Columbus. A street car ride under these lights is delightful.

SPECIAL NOTE

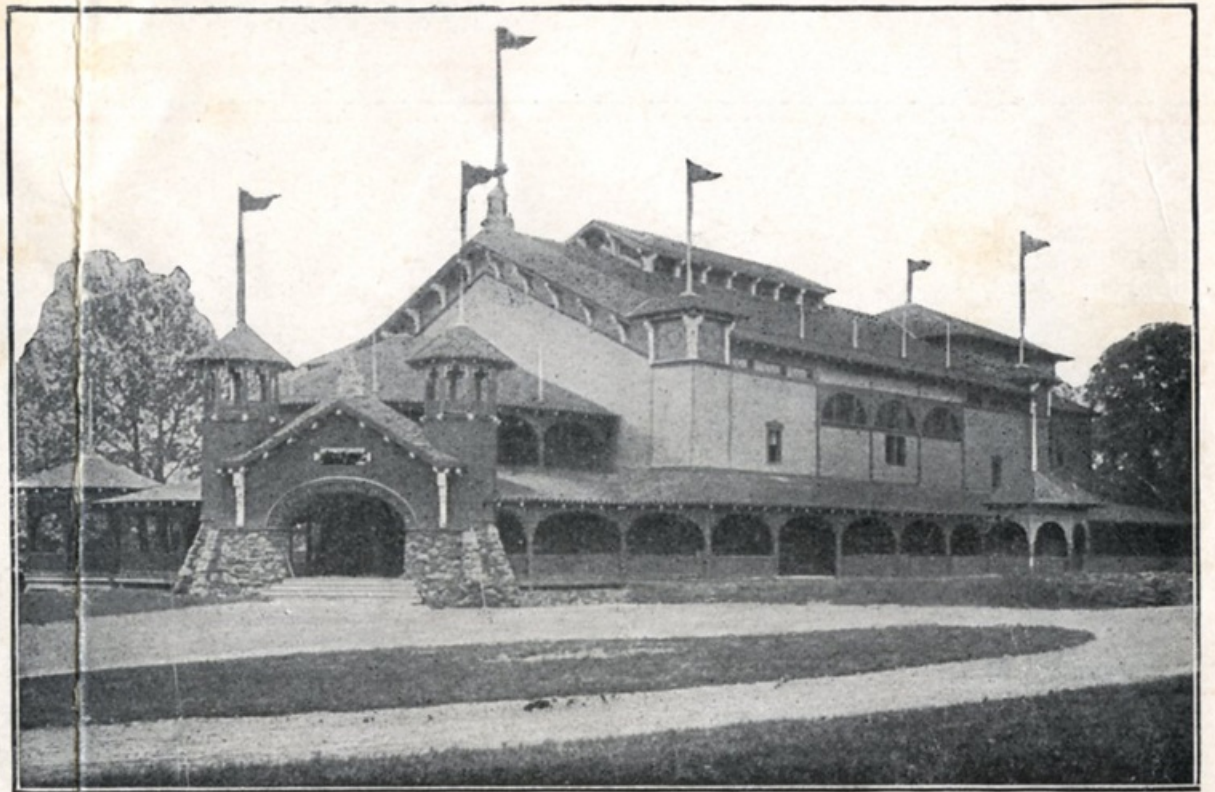
In so limited space it would be impossible to give full illustrations and descriptive matter of all the interesting points of a city of 150,000 people. By carefully consulting the Map, and taking Capital Square as the central point of the city where all lines pass, strangers will have no difficulty in reaching any desired locality.

OLENTANGY PARK

HAS NO RIVAL FOR NATURAL BEAUTY in any section of the country. It is located at the north terminus of THE COLUMBUS RAILWAY & LIGHT Co. lines, 3½ miles from the Capitol Square. Was opened to the public in 1896, and each succeeding year has been one of unquestionable success and of constant pleasure to the thousands of people of the city and the great multitude of excursionists from other cities and hamlets of the state, who have found it a charming resort for a days outing.

OPENS APRIL 29, 1906

ONLY TWENTY-FIVE MINUTES RIDE FROM THE HEART OF THE CITY. Ample car service is maintained at all times by THE COLUMBUS RAILWAY & LIGHT Co.



OLENTANGY PARK THEATRE

Take Any Northbound Car Marked "OLENTANGY PARK"

CARS IN AND OUT OF THE PARK EVERY TWO AND ONE-HALF MINUTES



DOCK AND BOATS

PARK FEATURES

The most prominent of its buildings is the magnificent theatre, erected in 1898 by the Olentangy Park Theatre Company, and under whose control the park is now operated, and to whom all communications as to park arrangements and privileges should be addressed at Columbus. Is conceded to be the finest summer amusement palace in this country. It covers a space of 80 by 250 feet and is surrounded by spacious verandas and promenades. Has a seating capacity of 2248.

Full band and Orchestra will be in attendance at every performance. Band concert daily, afternoon and evening, before each performance.

The Olentangy river flows through the park, affording most excellent facilities for boating. The grounds and both banks of the river are brilliantly lighted with electric lights. A score of modern park amusements are furnished, aside from the theatrical performances, and in this respect Olentangy Park is not excelled by any park in the country.

INDIANOLA PARK



INDIANOLA PARK is located on the east side of North Fourth street, in Indianola Summit Addition, and comprises seventeen acres of high rolling ground, which lies ninety feet higher than the corner of Broad and High streets (even higher than the State House dome), and only twelve minutes ride from Capitol Square.

THE SWIMMING POOL

Possibly the largest artificial basin of running water in the world, covering an area of thirty thousand square feet. Over this vast expanse of concrete floor and within the solid concrete walls continuously flow fifteen thousand gallons of pure artesian water every hour. The water ranges in depth from two to nine feet, so the wee little tot, boy or girl, may enjoy a wade or paddle, while his elders slide down the chutes and toboggans or develop their physical bodies in the varied strokes of the amateur or expert swimmer.



PICNIC PARTIES



The common excuse of people to stay at home when a picnic is proposed, "I do not like to sit around on the ground," can not be said of "Indianola." Plenty of well built tables with seats along the sides are scattered throughout the shady places. The popular priced and well-equipped restaurant is always in readiness to serve all the delicacies of a lunch for large or small party to be eaten under the Indianola shade, as well as to furnish hot coffee, tea or chocolate. The park contains a Three-way Figure Eight, Roller Coaster, Caroussel, Air Ship and other like amusements. Excellent shade, beautifully lighted at night; no intoxicants are sold on the ground; expert operators are employed; toilet rooms have all necessary accessories. There is shade, shelter and pure water to accomodate thousands comfortably.

The Fourth Street Car Line passes the entrance and affords splendid service and transfers to any part of the City.